



Performance! Release

September 09, 2011

Performance! Release 10.6270

Flowserve is pleased to announce release of Performance! 10.6270 the latest update to the Industry's foremost Control Valve Sizing, Selection and Project Management software.

Upgrade Instructions:

When logging into Performance!, the synchronization will automatically run. After Synchronization is complete, a web page will open with instructions to download and install the upgrade file. Follow the instructions on the webpage to complete the upgrade. As with Previous releases, the database synchronization will continue to keep your database updated between releases

The following Enhancements and Bugs are resolved in this release.

Enhancements

1. Revised Worldwide Terms & Conditions of Sale implemented

Print Menu

Print Form

Spec Sheet

Composite Quote

Price Breakout

Dimensional Drawing ADS

Detail Information

Parts List

Delivery Time Estimate

Deviation Summary

Cv Table

Less Lines

Print Terms and Conditions

Act Detail

Stroke Time

Model Number

Smaller Font

Customer Notes

Engineering Notes

Select Language: English

Print Preview Cancel Help



WORLDWIDE TERMS AND CONDITIONS OF SALE

1. **APPLICABILITY:** These Worldwide Terms and Conditions of Sale ("Terms") shall govern all sales of Seller's Equipment or Services to Buyer ("Order"). These Terms supersede any prior written or oral agreement, understanding, representation or promise, and any printed or unstated terms and conditions contained in Buyer's request for quote, purchase order, invoice, order acknowledgment, or similar document. These Terms may not be amended, supplemented, changed or modified except by consent or subsequent written agreement, signed by an authorized representative of Seller and Buyer. Seller's acknowledgment of Buyer's purchase order shall not constitute acceptance of any terms and conditions contained therein, regardless of how such terms and conditions may be published or displayed.

2. **DEFINITIONS:**
 "Buyer" means the company who accepted Seller's offer or is named in the Order.
 "Equipment" means all equipment and parts manufactured by Seller.
 "Seller" means the company named on the Order for Equipment or Services.

"Services" means work, direction of work, technical information or technical consulting and advice or other services furnished by Seller to Buyer.

3. **DELIVERY / SUSPENSION / FORCE MAJEURE:** For the delivery of Equipment within the United States, delivery shall be made C.W.R. (in accordance with INCOTERMS 2010) (as amended) Seller's plant. For the delivery of Equipment outside the United States, delivery shall be made F.O.A. Seller's plant. Shipping dates are approximate and are based on prompt receipt of all necessary information. In case of delay in furnishing complete information, dates of shipment may be extended for a reasonable time. In the event Seller provides transport services these will be quoted as a lump sum price based on destination and shipping mode.

In the event Buyer requests a delay or suspension in completion and/or shipment of the Equipment or any part thereof for any reason, the parties shall agree upon any cost and/or scheduling impact of such delay and all such costs to Buyer's account. Any delay period beyond thirty (30) days after original scheduled shipment date shall require Buyer to (i) take title and risk of loss of such Equipment, and (ii) make arrangements for storage of such Equipment with the Seller or other party. Seller's invoice, which is contractually based on shipment, shall be issued upon Seller's readiness to ship the Equipment.

Seller shall not be liable for delay in delivery due to causes beyond its reasonable control including, but not limited to, acts of God, acts of government, acts of Buyer, fire, labor disputes, boycotts, floods, epidemics, quarantine restrictions, war, insurrection, terrorism, riot, civil or military authority, freight embargoes, transportation shortages or delays, unusually severe weather or inability to obtain necessary labor, materials or manufacturing facilities due to such causes. In the event of any such delay, the date of delivery shall be extended for a length of time equal to the period of the delay.

pertaining to this Order which is proprietary to Seller without obtaining Seller's prior written consent.

10. **SPECIAL TOOLING AND DATA:** Unless otherwise agreed in writing all material, software, data processes, equipment, facilities and special tooling, which term includes but is not limited to jigs, dies, fixtures, molds, patterns, special tags, special jigs, special test equipment, other special equipment and manufacturing aids and measurements thereof used in the manufacture of the Equipment covered by an Order shall be and remain the property of Seller. Seller retains all rights, title and interest in drawings, engineering instructions, specifications, and all other written data if not furnished and/or specified to be supplied with the Equipment.

11. **EXPORT/IMPORT:** Buyer agrees that it will comply with all applicable import and export control laws and/or regulations including without limitation those of the United States and/or other jurisdictions from which the Equipment and/or technology may be supplied or to which the Equipment and/or technology may be shipped. In no event shall Buyer use, transfer, re-export, import, export or re-export the Equipment and/or technology in violation of such applicable laws and/or regulations.

12. **TAXES:** Seller's price, unless otherwise agreed, shall be fixed and does not include and Seller is not responsible for, payment of any tax levied for sales use, excise, value added, goods and services, business (franchise or privilege) or any other taxes, charges or other such taxes. Seller is only responsible for any tax imposed on Seller by taxing authorities in Seller's jurisdiction, which are based on Seller's revenue, income, net income, net assets, net worth, or capital or any taxes imposed in the United States. Seller is required to pay any taxes or other charges that are the responsibility of the Buyer, then Buyer shall promptly reimburse Seller those amounts.

13. **ASSIGNMENT:** Neither party shall assign an Order or any portion thereof without the advance, written consent of the other party, which consent shall not be unreasonably withheld.

14. **WAIVER/DELEGABILITY:** Failure by Seller to assert all or any of its rights upon any breach of an Order shall not be deemed a waiver of such rights either with respect to such breach or any subsequent breach, nor shall any waiver be implied from the acceptance of any payment or service. No waiver of any right shall extend to or affect any other right. Seller may process, nor shall such waiver extend to, any subsequent order or disclaimer breach.

If any portion of these Terms are determined to be illegal, invalid or unenforceable, for any reason, then such provision shall be deemed stricken for purposes of the dispute in question and all other provisions shall remain in full force and effect.

15. **APPLICABLE LAW / DISPUTES:** This Order shall be interpreted in accordance with the laws of the jurisdiction in which the Seller's facility accepting the Order hereunder is located, exclusive of any choice of law provisions. The Seller and Buyer expressly agree to include from this Order the United Nations Convention on

Experience In Motion



2) Currencies - The following currencies are supported for final pricing in Performance!. The exchange rate is automatically loaded when the Final currency is selected in Pricing Dialog.

The exchange rates are updated monthly.

Pricing : Representative Pricing

Qty	Site	Model	V-Mult	M-Disc	Disc	Price	Orig Cur	NPA Disc	Exch. Rate	Final Price	Final Cur	Disc ID	M-Disc Override	Over Status
1	SPR	Mark One	0.873	50.000	0.00	4359	USD	NA	0.6154	2682	GBP	2		OFF
1									Total	2682	AED			

Currency Symbol	Currency
AED	United Arab Emirates Dirham
AUD	Australian Dollar
CAD	Canadian Dollar
CHF	Swiss Franc
CNY	Chinese Yuan
CZK	Check Koruna
DKK	Danish Krone
EUR	Euro
GBP	British Pound
IDR	Indonesian Rupiah
INR	Indian Rupee
JPY	Japanese Yen
KWD	Kuwaiti Dinar
KZT	Kazakhstani Tenge
MYR	Malaysian Ringgit
NOK	Norwegian Krone
SAR	Saudi Arabian Riyal
SEK	Swedish Krona
SGD	Singapore Dollar
THB	Thai Baht
TWD	Taiwan New Dollar
USD	United States Dollar
ZAR	South African Rand



3) Maxflo3 Automated Drawing System (ADS) is interfaced to Performance!

You can now process Certified Drawings requests for Maxflo3 directly from Performance!

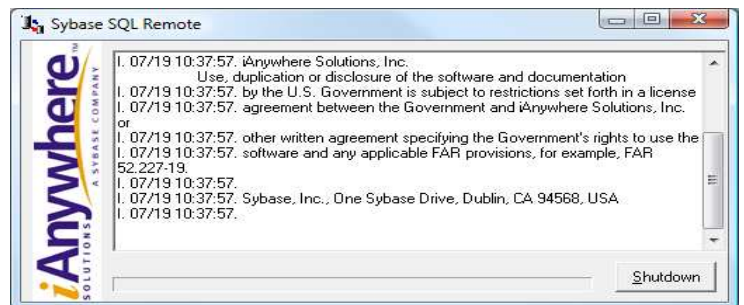
In order to process drawings., Valve record must be locked (Preliminary Quote, Final Quote, or Order locked).

When the valve is copied or a revision is made the drawing is reset and the user must request a new drawing. This requirement is in place due to the drawing being certified to the performance! specification.

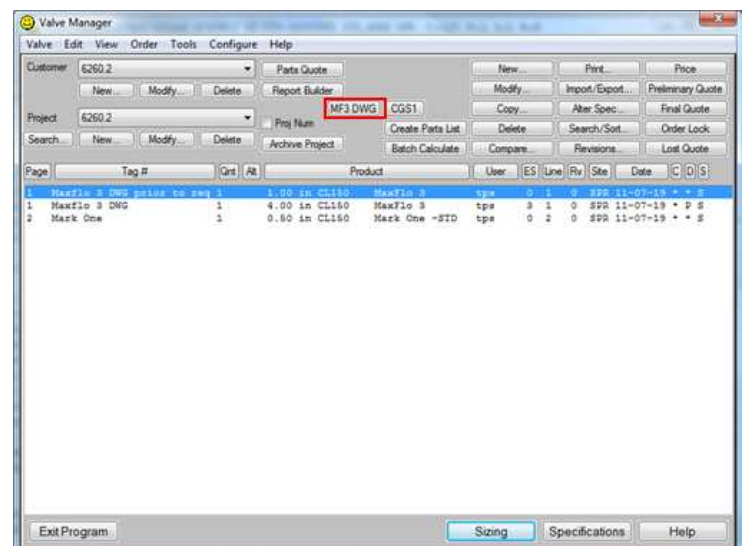
When the Maxflo 3 drawing is requested the information is synchronized to the ADS server for processing. The user can elect to synchronize the data immediately or wait to a future time.



When “Synchronize data now” is selected the Sybase SQL remote dialog will appear. If synchronizing is successful the dialog will automatically close. If some issue occurs during the synchronizing a message will appear and the user will need to manually shutdown via the Shutdown button.



It will typically take a couple of hours for the drawings to be processed. After this time the user will need to synchronize the performance! database again . Performance! processes the drawing information upon startup of Performance!. A dialog will appear indicating that this processing is occurring. It will take between 10 and 30 seconds to process a drawing.





Performance! Release

The status of the processing is displayed under the “D” column. There are 4 levels in which this status can be.

- 1) “*” – no processing has been requested
- 2) “P” – drawing has been requested and is pending.
- 3) “C” – Processing has completed successfully
- 4) “F” – Processing has failed and the user must request a drawing to be completed manually by Engineering.

Page	Tag #	Qty	Alt	Product	User	ES	Line	Rv	Site	Date	D	S
1	MF3 CASE 1	1		10.0 in CL150 MaxFlo 3	tps	4	1	1	SPR	11-07-06	*	S
2	MF3 CASE 2	1		12.0 in CL150 MaxFlo 3	tps	4	2	1	SPR	11-07-06	*	S
3	MF3 CASE 3	1		1.00 in CL150 MaxFlo 3	tps	0	3	2	SPR	11-07-12	*	S
4	MF3 CASE 4	1		8.00 in CL150 MaxFlo 3	tps	3	4	1	SPR	11-07-06	*	S
5	MF3 CASE 5	1		6.00 in CL150 MaxFlo 3	tps	0	5	1	SPR	11-07-06	*	S
6	MF3 CASE 6	1		8.00 in CL150 MaxFlo 3	tps	0	6	1	SPR	11-07-06	*	S
7	MF3 CASE 7	1		12.0 in CL150 MaxFlo 3	tps	0	7	1	SPR	11-07-06	*	S
8	MF3 CASE 8	1		10.0 in CL600 MaxFlo 3	tps	0	8	1	SPR	11-07-06	*	S
9	MF3 CASE 9	1		2.00 in CL150 MaxFlo 3	tps	0	9	1	SPR	11-07-06	*	S
10	MF3 CASE 10	1		4.00 in CL150 MaxFlo 3	tps	0	10	1	SPR	11-07-06	*	S
11	MF3 CASE 11	1		DN250 PN16 MaxFlo 3	tps	0	11	1	THR	11-07-06	*	S
12	MF3 CASE 12	1		DN150 PN16 MaxFlo 3	tps	0	12	1	THR	11-07-06	*	S
13	MF3 CASE 13	1		DN300 PN63 MaxFlo 3	tps	0	13	1	THR	11-07-06	*	S
14	MF3 CASE 14	1		DN80 PN16 MaxFlo 3	tps	0	14	1	THR	11-07-06	*	S
15	MF3 CASE 15	1		4.00 in CL150 MaxFlo 3	tps	0	15	1	SPR	11-07-06	*	S
16	MF3 CASE 16	1		4.00 in CL150 MaxFlo 3	tps	0	16	1	SPR	11-07-06	*	S
17	MF3 CASE 17	1		3.00 in CL300 MaxFlo 3	tps	0	17	1	SPR	11-07-06	*	S
18	MF3 CASE 18	1		4.00 in CL300 MaxFlo 3	tps	0	18	1	SPR	11-07-06	*	S
19	MF3 CASE 19	1		DN200 PN63 MaxFlo 3	tps	0	19	1	THR	11-07-06	*	S
20	MF3 CASE 20	1		DN200 PN63 MaxFlo 3	tps	0	20	1	THR	11-07-06	*	S
21	MF3 June 21	1		1.00 in CL150 MaxFlo 3	tps	0	21	1	SPR	11-07-06	*	S

An ADS (Maxflo 3 drawing) check box has been added to the print menu. For this release the drawing is not sent directly to the printer.

Print Menu

Print Form

- Spec Sheet
- Composite Quote
- Price Breakout
- Dimensional Drawing ADS
- Detail Information
- Parts List
- Delivery Time Estimate
- Deviation Summary
- Cv Table
- Print Price
- Surcharge
- Less Lines
- Print Terms and Conditions
- Act Detail
- Stroke Time
- Model Number
- Smaller Font
- Customer Notes
- Engineering Notes
- Manufacture Remarks

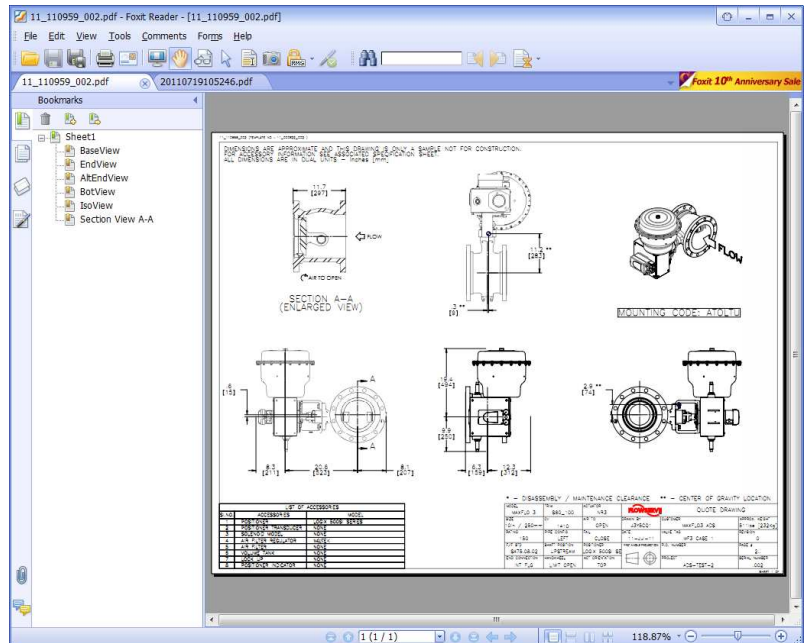
Select Language: English

Buttons: Print, Preview, Cancel, Help



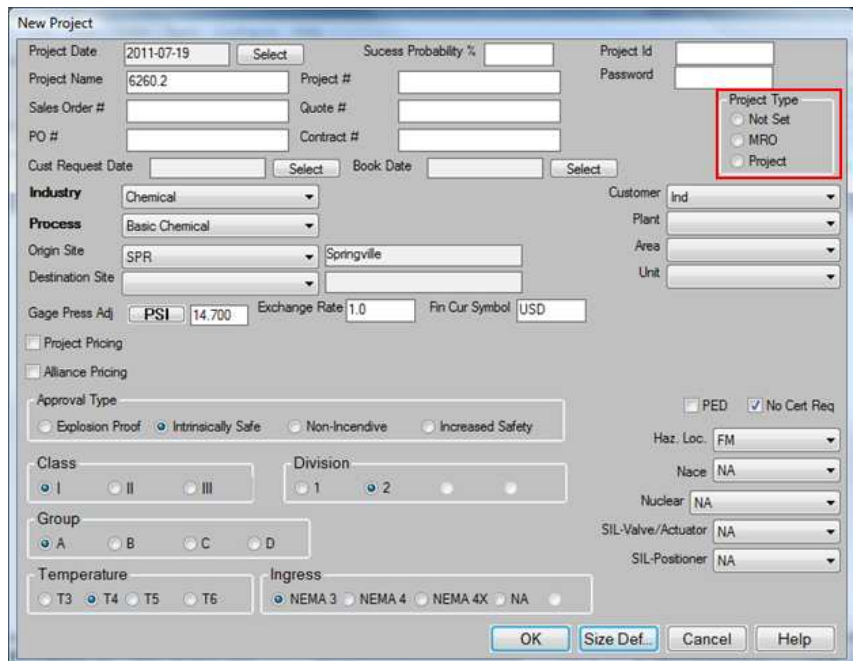
Performance! Release

The drawing is opened into the users default PDF reader. From here the drawing can then be printed. Note: Depending on the users PDF reader this may take up to 30 seconds to load.



4) Project Types Selection has been added.

- a) MRO
- b) Project

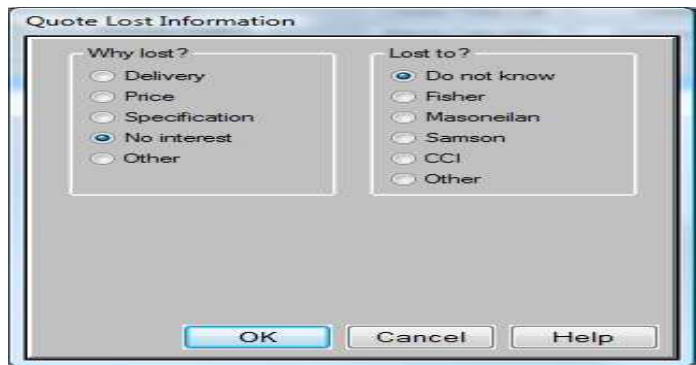
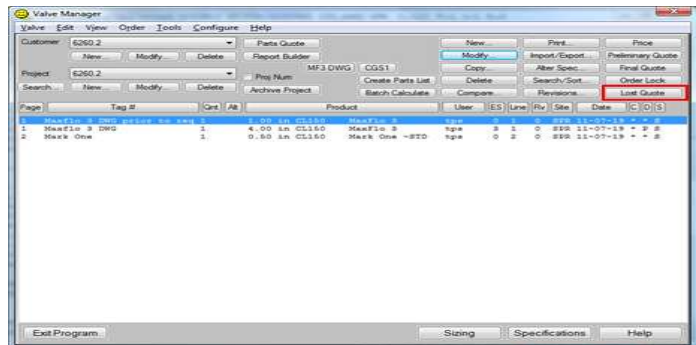




Performance! Release

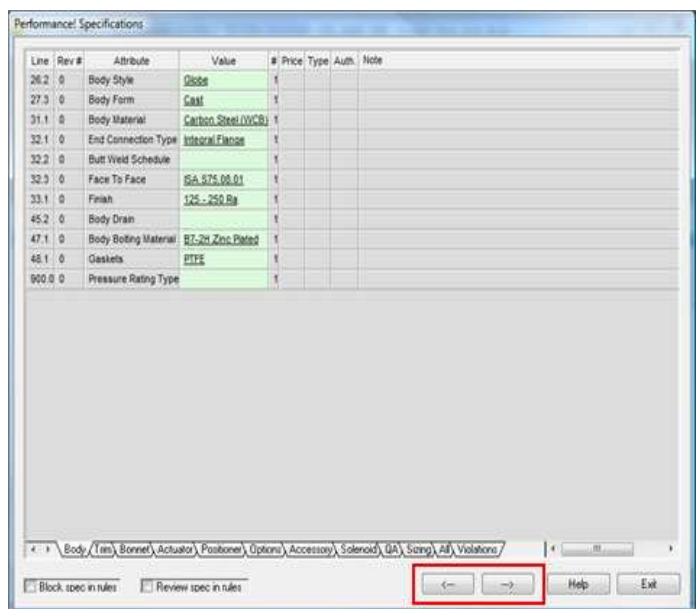
5) "Lost Quote" Information is Added.

The user can now fill in why the quote was lost and who the quote was lost to.



6) Sizing and Specification Screen Enhancements:

Arrows have been added to the bottom of the main sizing screen and specification screens. These will allow the user to step forward or backwards through the records in a project without having to go into the valve manager. This keys off the page number. Records that are locked will be skipped over. This feature is currently not optimized and it may take up to 10 seconds to move up and back a record while in specifications. This will be enhanced in the next release of Performance! with a target of taking no longer than 3 seconds.





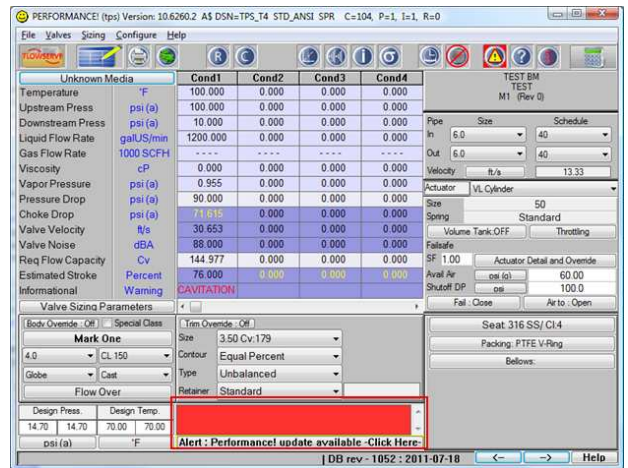
Performance! Release



Alert Mechanism Enhancement

The alert mechanism has been enhanced so it is more obvious when a Performance! update is available.

The alert will now automatically turn off once the Performance! update is applied.



7) Shell (EFA) - Kammer Products added as per agreement:

Product / Delivery	< 1 week	4-6 Weeks	8-12 Weeks	20+ Weeks	>1 million 24+
HPFlow - 11000	No	Yes	Yes	Yes	Yes
HPFlow - 15000	No	Yes	Yes	Yes	Yes
SmallFlow - 080000	Yes	Yes	Yes	Yes	Yes
SmallFlow - 385000	Yes	Yes	Yes	Yes	Yes
LinedFlow - 132000	Yes	Yes	Yes	Yes	Yes
DrainFlow - 051000	No	No	Yes	Yes	Yes
Multi - Z	No	No	Yes	Yes	Yes



The following list of reported enhancement requests and bugs are also fixed in this release.

The details can be viewed in our tracker <http://www.flowserveperformance.com/performtracker>

Id	Summary
9262	Shell Final Currency
9198	Labeler - Material X-REF
9196	Labeler export
9197	Labeler - Change some output formats
9222	Update Terms & Conditions
9166	Kammer multipliers for Shell - EFA
9213	Auto revision the process data.
9180	Notes input in Performance! on the Specification page do NOT show up on the printed copy
5409	MAXFLO 3 - Stay put in Fail last position
8918	PERF_ADS : TEST Cases
8307	Performance!-ADS MaxFlo3 Drawing system
8532	Deviation Summary - Block Hard Rules
8668	Dow agreement mandates assembled hydrotest
8710	Logix positioner 505si-32-W1DEE-0000 is not available from the supplier
8885	Enable "Valtek-LIN Act Sub" & "Valtek-ROT Act Sub" in SIN site.
8795	Can't print out CV Table on detailed information screen for 6" CL 2500 Valve with pilot operated trim.
8815	rotary actuator orientation(right or left)
8821	Make alerts more noticeable
8927	Crash coming out of stroke speed
8928	Note removal of remarks has problems
9002	Pressure drop showing is not correct
8811	Hitting the F12 key will overwrite the valve with a completely different valve. Usually a shearstream
9005	On Rotary Products no Mtg (left/right) specified on the Performance! printout however it is on the specification sheet.
9069	I'd like to have the FlowTop product as defined in Springville to be activated for the Edmonton Site
9027	Diagnostic Tests for site VIL renaming Functional Test
8983	Project Type
8937	Add a Quote Lost Category
8833	Right selection of Actuator when sized with Noise plate option for Maxflo 3
8906	Valves Navigation - Previous/Next such as Internet browsers.
8889	PERF_ADS : Customer Specific Off-line version (Non Replicated stand-alone users)
8884	unable to manually enter vapour pressure
8822	Shell - PRO logix option
4934	Starpac specification incorrectly changes trim characteristic
8816	stroke is wrong for cv value
8288	Shell agreement - Required upgrades

Please contact performance@flowserve.com or following URL for any questions or clarifications.

http://www.flowserveperformance.com/performhelp/feedback:performance_help

Regards

Mohan Babu
Product Manager, Sizing and Selection Application
Mbabu@flowserve.com